

Mustard Seed

May 1981

Faith Mennonite High School

Vol. 3, No. 9

Maranatha Varies School Events

"Why school on a Saturday?" expressed many of our opinions before we realized the significance of the day. We were to play another annual ball game against Maranatha Christian School.

Almost everyone ate his lunch in record time and left for Linville Hill School's ballfield. Here the guys practiced and at the same time wondered whether they would manage to win the games!

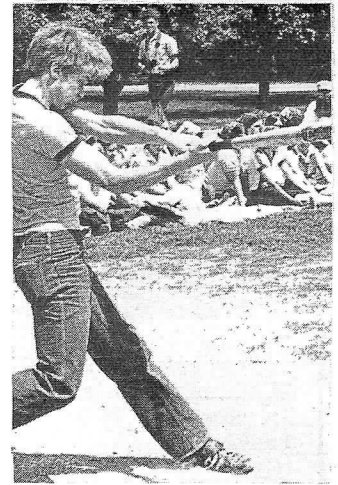
Maranatha bus arrived and the game began! Tension mounted as the game proceeded. After some very hard action from both sides, Maranatha won by an 8-6 score.

Following the guys' first game, the girls left for another ball diamond and played a game while the guys strove to win the second game. The Maranatha girls won the game with a score of 17-12, but our guys were excited to re-

port that they had won the second game with a score of 10-2.

With sunburned faces we headed back to the gym and were met with the aroma of a delicious meal. After our appetites had been satisfied, we began getting ready for the program Maranatha Anthems had prepared to share with us.

Their program consisted of three different sections depicting the life of Christ.



Lloyd Beiler determines to startle Maranatha with a home run.

We went home agreeing that a day at school could be exciting even though it was on a Saturday.

-Bethany Stoltzfus

GRADUATION SUPPLEMENT INSIDE

Bomberger Speaks

Luke Bomberger, representative of Mennonite Foundations will speak on the topic, "Planning for the Future: Wills and Annuities", on Friday evening, May 22 at 7:30 pm. The meeting, which is open to the public, is being sponsored by the Bldg., Finance Committee of FMH.

The meeting is designed to make patrons and friends of the school more aware of their responsibility to their families. Ways to include church organizations like FMH in a family's financial future will also be discussed.

Following the discussion by Bomberger, the finance committee will report on the current status of the Building Fund.

Concert Accented With Chorale Talks

The Sixth Annual Spring Concert will be held in the school auditorium on May 21, 1981 at 7:30 pm.

A special presentation by Faith Chorale will highlight the program.

Students from Chorale will be sharing testimonies about meaningful experiences which furthered their Christian growth as a result of being in Chorale.

Linking the testimonies will be various sections of Chorale's spring program which have been presented in ten local churches and in five different places on tour in April.

Men's Chorus will begin the program with selections from Life Songs #1 and the Songs of the Church including "Into the Woods" and "Story of the Cross".

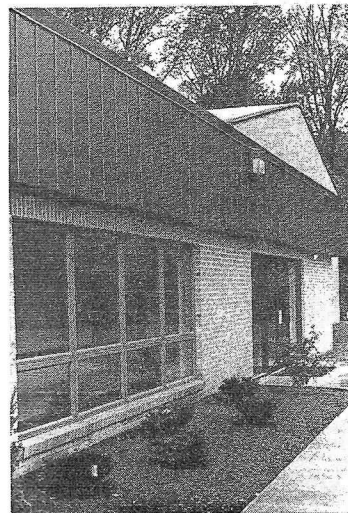
Some of the songs by Ladies Chorus will be the "Easter Song", "Jesus is a Friend of Mine", and "A

Prayer" by Beethoven.

"Psalm 150" by Lewandowski will be presented for the second year by Large Chorus. The anthem, which may become an FMH tradition will climax the

first portion of the program. Alumni who helped to sing it previously are invited to borrow music and participate with the chorus in this exuberant praise number.

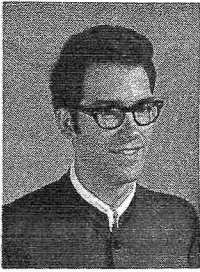
Con't on page 3



FMH Facelift

Shrubs have recently been planted at the school. Designed by Huber Nurseries they were planted by Aaron Beiler

Included are several different kinds of holly, Robusta greens and Bradford Flowering Pear, which makes the entrance to the school a very creative site.



Principal's Corner

Mr James E. Gochnauer

What did Moses, Elijah, and Peter all have in common? Their valleys.

Imagine the temptation to depression, anger and despair that must have overwhelmed Moses as he came down from Mt. Sinai after having received the law. He had just spent 40 days in the presence of God. The glory was still radiating from his face, and his people were offering worship which included acts of fornication and child sacrifices to a pagan idol.

Elijah had just completed a momentous victory on Mt. Carmel. Baal had not answered his worshippers from 9:00 in the morning until 6:00 at evening. Yet God sent fire from heaven to consume not only his sacrifice, but the stones and a large quantity of water as well. Following that, 450 prophets of Baal were killed by Elijah and the Israelites. Then one comment from Jezebel sent him three days journey into the wilderness where he sat down under a juniper tree and complained to God, "I have been very zealous for the Lord God Almighty. The Israelites have rejected your covenant, broken down your altars, and put your prophets to death with the sword. I am the only one left, and now they are trying to kill me, too. (I Sam. 19:10, NIV),"

Peter's mountain-top came when Christ asked, "Who do you say I am?" Peter answered, "You are the Christ, the Son of the living God. (Matt. 16:15-16, NIV)." After all the times that Peter got his foot in his mouth, the affirmation from Christ must have been a real encouragement. But only a short time later, Jesus needed to say to him, "Out of my sight, Satan!" as he tried to discourage Christ from fulfilling his mission.

We're susceptible to valleys, too. Some of us felt really close to God on Chorale tour as He sustained us through program after program and gave us His peace as we waited on Him following the bus robbery. Others were moved to rededicate their lives to God's service following a challenging week with Brother Kolb.

Now we can expect the valleys. Satan will try to test us in those areas where he knows we are most sensitive at a particular time. For some that will be through parent-teen confrontations. For others it will be natural difficulties. For still others the valley will come by way of a jumbled schedule, an extra assignment, or an unrealized goal.

Fortunately, our Christian life does not

Con't on page 4

Tuition Increases In '82

At a recent meeting the school board set the tuition for the 1981-1982 term at \$1250. The increase of \$250 reflects the increased cost of salaries, educational supplies and increased expenses related to the new building.

In addition to the increase in tuition, projected operating gifts for next year have risen to \$250 per student. Total per child cost of education is projected at \$1,500, making the total budget 100 students at \$150,000.

Discounts are still in effect for second and third children. The second child is \$100 less; the third is \$200 less. Patrons paying tuition in

full by September 1, 1981 can also deduct a 2% discount.

In light of rising tuition costs FMH is recommending more churches to adopt Brotherhood Sharing Plans (see article page four).

Whatever a family's financial situation or a church's position might be, we still need to believe God for the resources necessary to educate our children as He would have us to do.

"Show and Sew" Time

Mothers, your help is needed to sew curtains for the new school. Funds have been received to do several rooms and Mrs. Harold Ranck is coordinating sewing the curtains in the home ec. If you can help, call her at (215) 932-3309.

More funds are needed to finish all the rooms. Single windows are \$58.00 each and double windows are \$91.00 each. Send your designated gift to the school office and mark it for "Curtains".

Seminar Planned

The Millwood District of Lancaster Mennonite Conference is sponsoring the Native Youth Seminar by Brother Clair Schnupp at FMH on Friday, Saturday and Sunday, May 29-31.

Brother Schnupp is director of Northern Youth Programs, Dryden, Ontario, Canada.

DATE BOOK

- May 17 - Faith Chorale at Rawlinsville Menn. Church
- 18 - Alumni Homecoming
- 21 - Spring Concert 7:30 pm.
- 22 - Luke Bomberger "Planning for the Future with Wills and Annuities."
- 24 - Gospel Team at Blainsport Menn. Church
- 28 - Ascension Day. We DO have school. Students will need to provide their own transportation.
- 29 - Biology Field Trip to the ocean
- June 3 - Last day of school for seniors
- 5 - 10:00 am. Class Day Exercises (Public invited) 1:00 pm. Graduation
- 8 - Annual Business meeting 7:30 pm.
- 11 - Last day of school for Freshmen through Juniors
- 15-19 - Interviews for new students

Chapel Begins School Day

Chapel is a time of worship, a time to praise the Lord. Each day of school begins with chapel. The teachers take turns having chapel and every Tuesday we have a guest speaker. Often on Thursday we have a song service. But sometimes the teachers think chapel might be getting a little too routine, so they plan something different.

This past fall, the Lamar Howe family had a slide presentation and special singing. We really enjoyed seeing their slides of Canada, where they lived 11 years before moving back to Pa.

Sometimes we have homeroom Chapel. Each class goes to its homeroom and then they worship together.

A highlight of each

spring is Spiritual Life Week. A speaker comes each morning for one week and talks to us about how to better our Christian lives. This is very meaningful because it helps us grow in the Lord and with each other. This year, Spiritual Life Week was April 27 - May 1.

On April 9, Melvin and Joyce Eby and their children, Jerry, Michael, and Melody gave a skit, special singing, and a few other things relating to "prejudice". Their message was very clear as we realized how easy it is to be prejudiced toward the poor, the rich, the Indians, the Negroes or even the handicapped.

We want to praise the Lord that this privilege of worship has not been taken from us.

-Betty Burkholder

Week Challenges Many

As Spiritual Life Week came to a close many responses were heard from students concerning areas in which they had been challenged by Norman Kolb's chapel talks.

One student said "I have become more sensitive to the needs of others around me."

Many particularly enjoyed the subject on the tongue and the unique way he tied it in with an hourglass. "We need to say the right things before the

hourglass runs out instead of only wishing we would have."

Spiritual Life week to one student was like "a cleansing balm." Problems were erased as God worked in many lives.

To all it was a very meaningful, treasured experience. Areas were seen in lives that needed to be changed. As one student put it "It gave me a new zeal to blossom because I really do have something to blossom about."

-Joy Brenneman

New Staffs Appointed

New staffs have been selected for Mustard Seed and Silver Crest.

The newspaper staff for 1981 - 1982 will include Sandy Newswanger and Valerie Beiler as typists, Betty Burkholder and Wanda Metzler as literary editors and Victor Stoltzfus and Merv Lapp as layout editors.

Included in the Yearbook staff are Bethany Stoltzfus and Kaye Bowman who will be on for the second year. The "rookies" will be Anthony Hahn, Dale Hess, Linda Sensenig and Rose Esh.

The 1980-1981 staffs extend their sympathies

and best wishes for their good health!

Concert con't

Other selections by the group include "Since by Man Came Death" from the Messiah by Handel, "The Holy City" by F.B. Weatherly, and to close the standing, "Praise God From Whom All Blessings Flow" from the Mennonite Hymnal.

An open house for those wishing to see the new facilities will be held one hour before and after the concert.



Alumni News

Miss Cynthia J. Brenneman

Lynnette Zimmerman ('80) is presently employed at R.W. Sauder, Inc., Lititz, as a secretary in an egg processing plant. Included in her work is figuring the amount of eggs bought or processed and computing mileage and cost of transportation.

Although she enjoys her job, she misses working with people and would someday like to get a job with more activity and more contact with people. She is involved in youth group activities such as "God's Acre", making fruit baskets and going caroling.

A recent trip to Florida was accented by bright sunshine, warm breezes, a beautiful beach, and a walk through the Sarasota Jungle Gardens.

For those who are

still in school, listen to what Lynnette has to say, "I miss school, even the studying, and would encourage all those there to enjoy it now and count it as a privilege."

Martha Smucker ('80) is employed at the office of Dr. Rajan and Dr. Galanis as a doctor's assistant. Her jobs vary from secretarial duties to that of taking patient's height, weight, temperature, etc. and assisting the doctor in minor surgeries. The opportunity of meeting new people makes her job enjoyable. Martha is actively involved with the Pequea Youth Group and is also secretary-treasurer of the Mixed Chorus.

She is presently considering attending Rosedale Bible Institute.

Yes, the 1981 Silver Crest has arrived! The book is packed with highlights of the year. We're sure you'll enjoy it. Get your order in now, while the supply lasts.

ORDER YOUR 1981 YEARBOOK TODAY

Price of each \$6.00

No. of books ordered _____

Name _____

Address _____

(City) _____ (State) _____ (Zip) _____

FMH Encourages Church Sharing Plans

As costs of education continue to rise in the midst of economic hard times, FMH joins with the Lancaster Conference Board of Education in suggesting that congregations share the burden for the education of the church youth.

In the most commonly accepted plan, congregations contract with their local schools for the entire cost of education (COE) for the students enrolled. The COE reflects the amount of tuition due for each student as well as the church's share of gifts for each student.

There are several very important reasons for local

congregations to explore this option.

- (1) It distributes the burden for education over a wider group. The Bible says, "Bear ye one another's burdens and so fulfill the law of Christ." Furthermore, public education has taken the lead years ahead of God's people by distributing the cost of education over the whole populace, age 18 and up in a way that hits all equally.
- (2) Parents of school age children are at one of the hardest times in a family economic growth. Children need clothes yearly, Medical and food bills peak during this period, and many families are paying mortgages and loans that will be amortized as the family becomes more established.
- (3) Contributions to a church fund that is approved by congregational vote and which is distributed without partiality to any family in the congregation are understood to be tax deductible. This can amount to savings of up to \$400 for families contributing to the school through the church.
- (4) The school is sure of meeting its obligations. Many schools budget their expenses at the beginning of the year. By having churches pledge the COE for each child, they insure the ability to meet their budgets. This eliminates the need for end of the school year financial appeals to participating congregations.

Before exploring these options further, contact the FMH office or the administration of your local school. We can provide you with the forms you need and help your church get set up to participate this coming year.

Let's band together to fulfill to a greater degree Christ's teaching's to us.

Principal's Corner con't.

depend upon our emotions, upon our circumstances, or upon our mountains and valleys. Rather, it depends upon God, who said, "I will never leave you nor forsake you," and "No temptation has seized you except what is common to man. And God is faithful: He will not let you be temp-

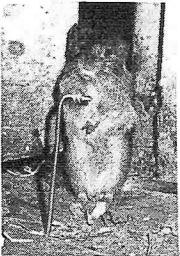
ted beyond what you can bear. But when you are tempted, he will also provide a way out so that you can stand up under it (I Cor. 10:13, NIV)."

Praise God! With Him we can, through both mountains and valleys, "Press on toward the goal to win the prize for which God has called (us) heavenlyward in Christ Jesus (Phil. 3:14)."

Faith Mennonite High School

Route 1

Kinzers, PA 17535



Max the Mouse

by Maximillian van Musculus

Hullo everybody,

I'm due for a long vacation. I've lived with you 88 students and seven teachers for nine months, wrote nice things about you in the paper and yet I was only asked once to sign a yearbook. I don't consider that to be any relative to consideration, which was what I expected. After all, I was an integral part of the school as any mouse ever was. So during the lazy summer months ahead, when no noisy, haughty students are around, I'll be planning my revenge. I might not come back or I'll stop talking with you or...

Did you hear about the changes in the Mustard Seed staff? The typists are retiring, (something about gradation or some big word like that). Ken Gehman is gradating too. He was my friend and his yearbook was the one I was privileged to sign. I guess I'll have to get acquainted with the new staff and hope that they'll be as friendly.

I felt like being philosophical in summarizing the events and

themes of this past year. I went to the Science room but no scientific formula had been created to describe the year.

No Algebra equation had been computed to easily record as a theme. To my knowledge the students are still searching for the meaning of "x". Don't they know that "x" is for xyphoid and that it is related to CPR?

German I was foreign to me so I didn't inquire into it because I wanted an idea that I could understand.

I walked with confidence to the English room because literature always reveals themes. However, none was written. "Why don't you write it, Max?" Miss Witmer questioned. I agreed to, but I discovered that I too could not really understand it. It was intangible but was related to love, growing and positive attitudes. I am still searching - just give me a little more time.

Do you know what? In spite of the yearbooks and mouse traps, I think I'll miss you over the summer. Happy vacation!