

FMH Expansion Project

Faith Mennonite High School • 5085 Woodland Dr. • Kinzers, PA 17535 • 717-442-8818

Dear friends of Faith Mennonite High School,

We are excited to announce a building project for FMH that will greatly benefit our school.

Our plans are to build on to the current school building. (Please see the back of this letter for a diagram.) We plan to build a kitchen adjacent to the gymnasium as well as expand the gym. This will bring about some very profitable changes such as additional classroom space.

Currently some classes are being held in the library, conference room, and even the kitchen. While we are thankful we have a place to hold these classes, this arrangement presents some challenges such as when hot lunch is being prepared -- this disrupts classes that are held in the kitchen.

With this expansion project, we will also be able to provide more seating in our gym for larger

events such as concerts, fund-raisers, and banquets.

Having the kitchen and the gym beside each other will be a great benefit every time food needs to be served in the gymnasium. No longer will it need to be transported from the other side of the school building. This will also be good for those occasions when we rent the gym since they will no longer need access to "the other end" of the school.

The students have been challenged to raise \$100,000.⁰⁰ towards this project by December 1, 2016. We invite you to join us in this exciting project and help us be able to expand our classroom space, make the kitchen easily accessible for banquets, and enlarge our gymnasium to host large school events.

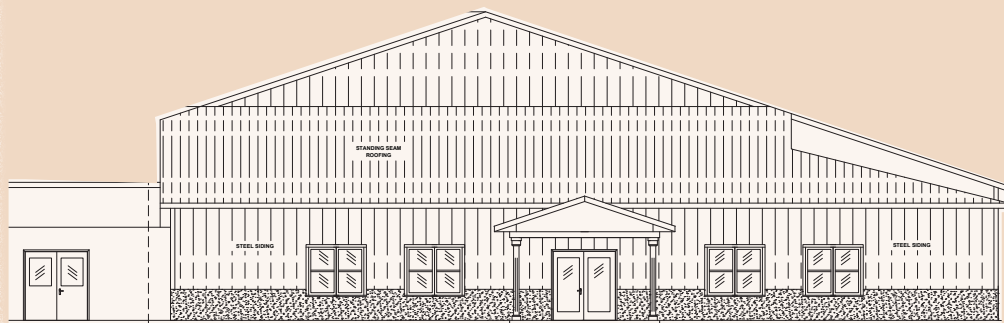
Thank you for your interest in our school!

----- please cut and return with check -----

Make your check payable to "Anabaptist Foundation" with "FMH Expansion Project" on the memo line.

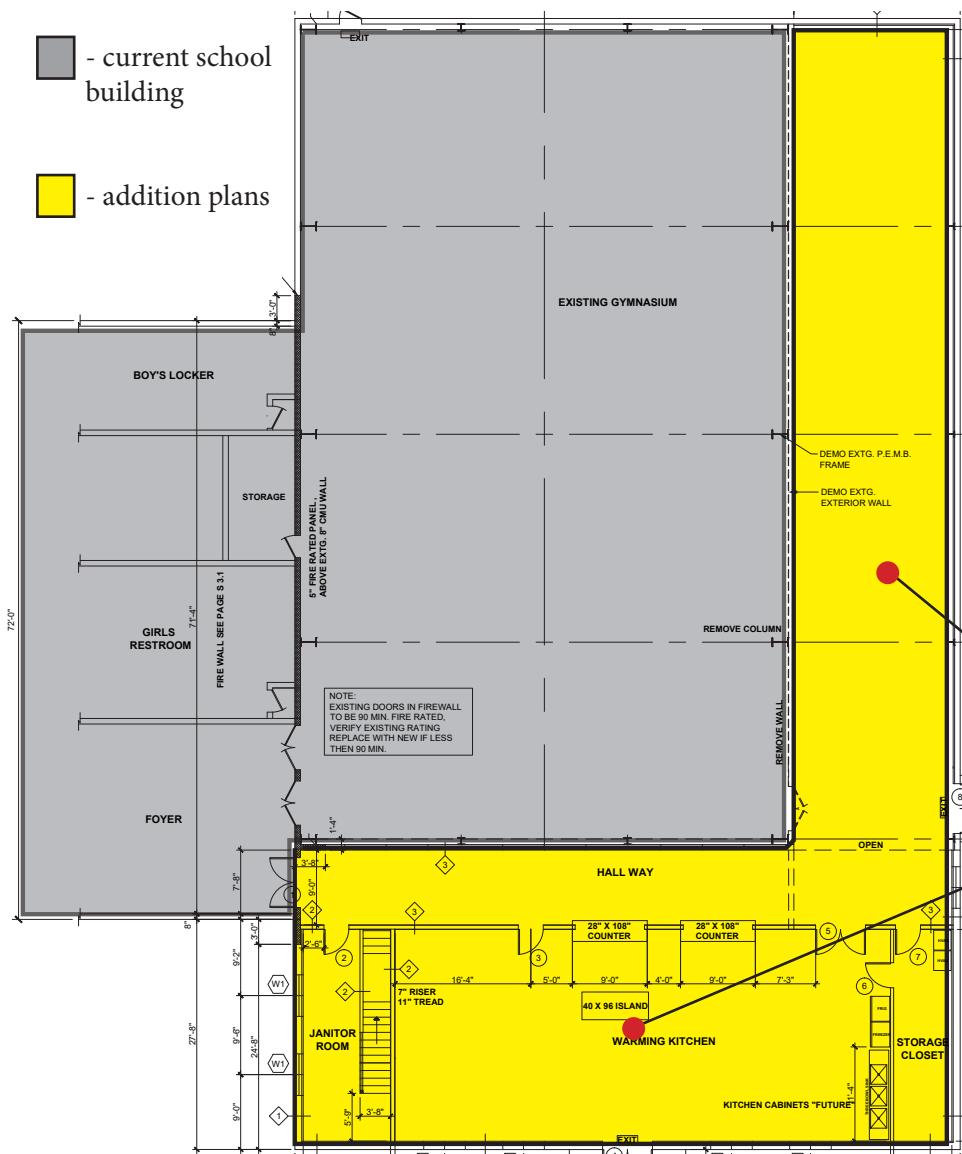
Mail your check to: Anabaptist Foundation, 1245 Old Route 15, New Columbia, PA 17856."

Please mail in by December 1, 2016. You will receive a tax-deductible receipt from Anabaptist Foundation.



Yes, I would like to help with the FMH Expansion Project!

- ☐ \$100.⁰⁰
- ☐ \$500.⁰⁰
- ☐ \$1,000.⁰⁰
- ☐ other \$ _____



Our goal:
\$250,000.00

- \$100,000.00 raised by December 1, 2016 by our students.
- Another \$100,000.00 raised by January 15, 2017 by alumni and friends of FMHS.
- Final \$50,000.00 raised by June 1, 2017.

We plan to add:

- 20' x 99' to the side of the existing gym
- 36' x 80' section to the side of the building.

For more information or to see the progress of our fundraising, please visit our website at

www.FaithHighSchool.org

or visit us on Facebook

www.facebook.com/FaithMennoniteHighSchool/



Thank you for investing in our school and our students!